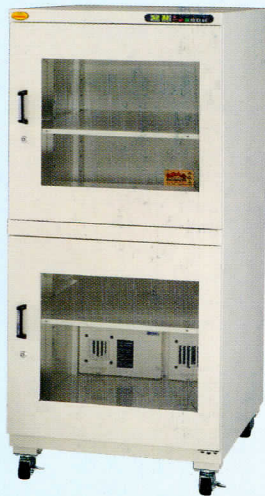


Industrial DRY Cabinet



DRY-460NS, DRY-460S
DRY-460SS, Ultra-DRY-460

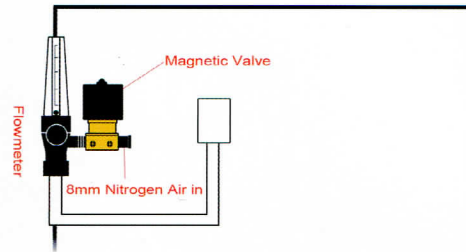


DRY-700NS, DRY-700S
DRY-700SS, Ultra-DRY-700

NS-Series

Features:

- ▶ Automatic control the volume of nitrogen.
- ▶ Metal frame door panels are equipped with push-in door lock.
- ▶ Humidity level will be able to drop down to less than 5% with nitrogen supply.



DRY-S Series

Features:

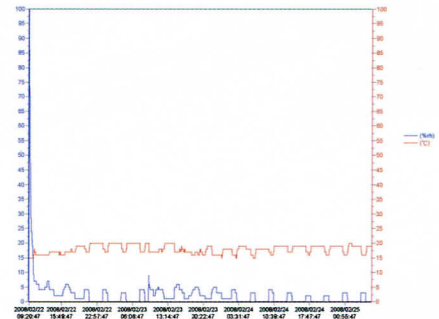
- ▶ Compared with DRY series, DRY-S series are equipped with additional cooling chip and/or (depends on model) dehumidify module.
- ▶ Microcomputer control TE cooling system
- ▶ High precision humidity sensor, accuracy $< \pm 5\%RH$

- ▶ Accurate humidity control at set value $\pm 2\%RH$
- ▶ 1mm galvanized steel housing with powder coating

DRY-SS Series

Features:

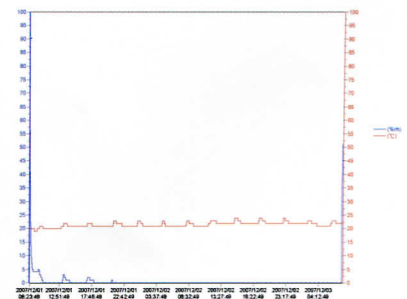
- ▶ Equipped with dual dehumidify system so draw %RH down to 5%RH within 3 hours. The lowest %RH will be able get down to 2%RH.
- ▶ High precision humidity sensor, accuracy $< \pm 5\%RH$
- ▶ Accurate humidity control at set value $\pm 2\%RH$
- ▶ 1mm galvanized steel housing with ESD coating
- ▶ Equipped with static conducting glass panel.



Ultra-DRY Series

Features:

- ▶ Equipped with dual dehumidify system so draw %RH down to 3%RH within 3 hours.
- ▶ The lowest %RH will be able get down to 0%RH.
- ▶ 0%RH and no bounce back when regenerating.
- ▶ High precision humidity sensor, accuracy $< \pm 5\%RH$
- ▶ Accurate humidity control at set value $\pm 2\%RH$
- ▶ 1mm galvanized steel housing with ESD coating



DRY-1460NS, DRY-1460S
DRY-1460SS, Ultra-DRY-1460